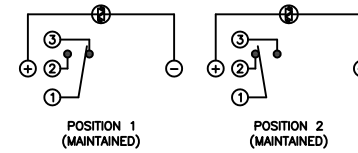


**SCHEMATIC**



**SPECIFICATIONS**

**FUNCTION:**  
1P2T ON-ON

**RATING:**  
2A 24VDC

**ILLUMINATION VOLTAGE:**  
2.8V 20mA

**CONTACT RESISTANCE:**  
Initial: 50mΩ Max. at 1A 12VDC

**INSULATION RESISTANCE:**  
1,000MΩ Min. at 500VDC

**DIELECTRIC STRENGTH:**  
2,000VAC Min. for 1 Minute

**ELECTRICAL LIFE:**  
50,000 Cycles

**MECHANICAL LIFE:**  
1,000,000 Cycles

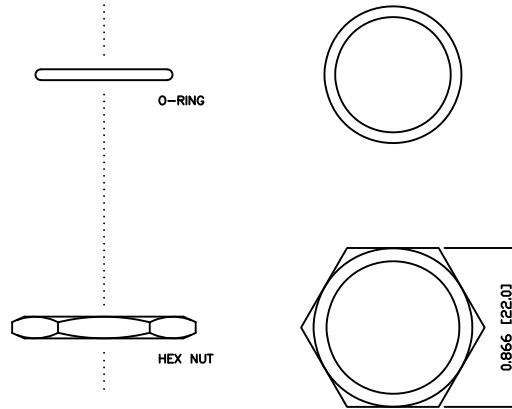
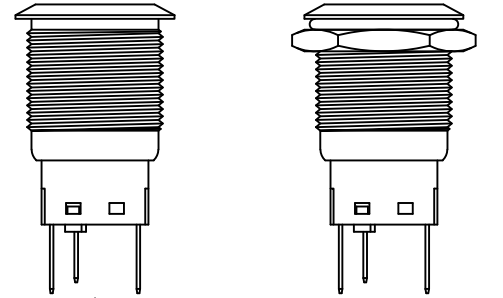
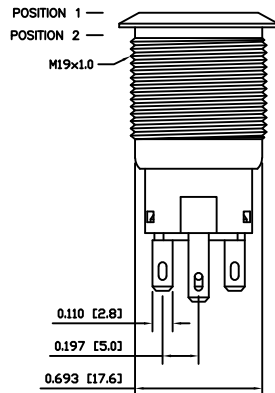
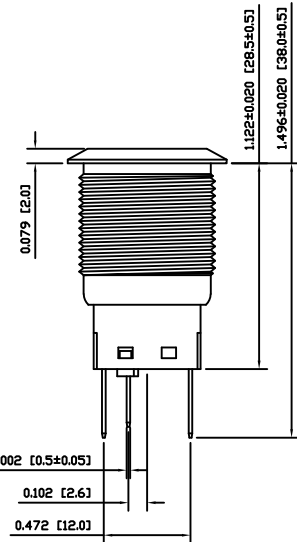
**TEMPERATURE:**  
Operating: -20°C to 70°C

**INGRESS PROTECTION:**  
IP65

**APPROVALS:**  
**RoHS**  
COMPLIANT

A

A



**MATERIALS**

**BUSHING:**  
Aluminum

**BASE:**  
Polycarbonate (PC)  
Polybutylene Terephthalate (PBT)

**ACTUATOR:**  
Aluminum  
Polycarbonate (PC)

**HARDWARE:**  
Nickel Plated Brass (H59)

**SEALING:**  
Silicone Rubber

**INNER ASSEMBLY:**  
Polyoxymethylene (POM)  
Phosphor Bronze

**SPRING:**  
Spring Steel

**CONTACTS:**  
Silver/Cadmium Oxide (AgCdO)

**TERMINALS:**  
Silver Plated Brass (H62)  
Silver Plated Phosphor Bronze

**O-RING:**  
Silicone Rubber

**COLORS AND FINISH**

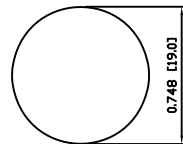
**BEZEL:**  
Black  
Anodized Finish

**ACTUATOR:**  
Black  
Anodized Finish

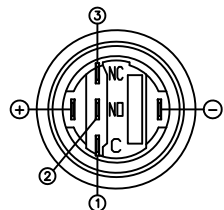
**ILLUMINATION:**  
Blue (Forward)  
Blue (Reverse)

**MARKING:**  
None

**SUGGESTED PANEL CUTOUT**



MAXIMUM PANEL THICKNESS: 0.433 [11.0mm]



BODY	A	09/07/24	CAB
COLORS	A	09/07/24	CAB
MATERIALS	B	09/10/16	CAB
SPECIFICATIONS	A	09/07/27	CAB
REFERENCE	REV.	DATE	BY

THE INFORMATION CONTAINED IN THIS DOCUMENT IS PROPRIETARY TO E-SWITCH AND IS NOT TO BE COPIED OR TRANSFERRED

B	UPDATED RATING TO 2A @ 24VDC	23595	10/8/18	MJR
A	INITIAL RELEASE	PCRD0220	09/11/30	CAB
REV.	DESCRIPTION	PCR	DATE	DRAWN BY

DIMENSIONS	
INCHES [MILLIMETERS]	
GENERAL TOLERANCES	
±0.008 [±0.2] / ±1'	
SCALE	PROJECTION
DRAWING NOT TO SCALE	1:1

## PV4F23011-341

DRAWING NUMBER 52-PV4F23011341	DATE NOVEMBER 30, 2009	REVISION B
-----------------------------------	---------------------------	---------------

D

D